



Your Software Partner for  
**Planning  
Building  
Operating**  
your Fiber Network

**We help you succeed from start to finish!**

## We offer end-to-end automation including

### » Survey

Survey the demand for FTTH in your service area, collect IP-based information about which providers your community currently uses, and conduct speed tests to see how fast your future customers' connections are today. Gain actionable insights into competition, and your future subscribers likeliness to sign up for your services.

### » Integrated Subscriber Marketplace

The key to efficient network operations is self-service and therefore, COS Business Engine has an integrated online marketplace, customized to fit your brand, enabling subscribers to buy services 24/7.

### » My Pages

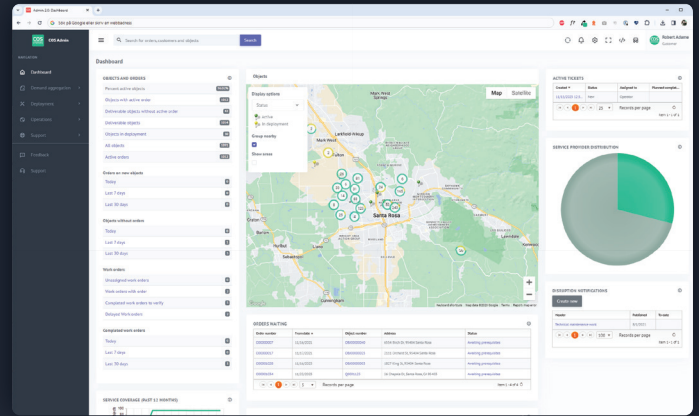
Subscribers can manage everything from service selection, billing preferences, communication history, and trouble tickets on their MyPages, freeing up time for your CSRs to give excellent customer support to those who reach out.



*Subscriber Marketplace that can be tailored to your brand's needs*

# Key Solutions: End-To-End Automation from sign-up to billing

- » **Customizable Installation Workflow Engine**  
Supports any installation process with customizable work orders with sub-tasks. Installers use the field tech portal to access work instructions, log completed work in real time and document the work done with pictures and notes.
- » **Zero Touch Provisioning**  
Once a customer has purchased the service(s) of their choice, services are provisioned automatically and ready to be used at the customer's address within minutes.
- » **Automated Billing for any Business Model**  
Completely automates your administration and billing processes. In traditional service provider networks, subscribers control billing preferences on their My Pages, and in Open Access/wholesale networks, wholesale fees are automatically calculated per provider and month.
- » **Hardware Agnostic Provisioning Automation**  
Our growing list of partners include; Nokia, Calix, Ciena/Tibit, Harmonic, Adtran, DZS and we also support Radius provisioning and integrations to other OSS system.



*The Admin Interface gives you a real time overview of your fiber project*

**Our Open Access community consists of Service Providers, Networks and Operators. Ask us for introductions!**

## We are the right fit for...

- » Fiber network operators
- » Private telcos
- » Infrastructure investors
- » Municipal networks
- » Utilities
- » Coops
- » Open Access and wholesale network operators
- » Enterprise networks
- » Companies consolidating acquired networks
- » Middle mile networks expanding into FTTH



*The COS family is here to support your fiber project from beginning to end*

## Company Description

COS Systems is a leading provider of cloud-hosted network management and billing solutions for service providers. COS Business Engine is a proven network management solution (BSS/OSS) supporting Service Providers and Open Access Networks. The end-to-end platform provides subscribers self-service and digital sales and marketing through an online marketplace.

Learn more about COS Systems at [www.cossystems.com](http://www.cossystems.com)